

SANDUSKY BAY FRONT CORRIDOR COMMITTEE MINUTES

January 4, 2018

ATTENDEES:

Lance Warner, Member
Joe Hayberger, Member
Mike Zuilhof, Member
Steve Poggiali, Member
Mark Harrington, Vice-Chair

David Miller, Member
Greg Voltz, Staff
Angie Byington, Staff
Carl McGookey, Chair

Kevin Zeiher, Member
Aaron Klein, Staff
Bill Semans, Member
John Lippus, Member

ABSENCES:

Judy Corso
Pete McGory

John Mears
Gary Mortus

Tim Schwanger

CALL TO ORDER:

Meeting is called to order by Carl McGookey, Chair.

Tim Schwanger, Secretary is absent. Mark Harrington, Vice-Chair tasked with duties of Secretary for recording of minutes for the meeting.

MINUTES:

Lance Warner moves that minutes of previous month's meeting be approved. Steve Poggiali seconds the motion. No discussion. Motion passes unanimously of all members present.

STAFF REPORT:

Aaron Kline reports on current status of Shoreline Drive project; public presentations made; and movement of project from City Planning to Engineering Department. Mr. Kline explains that the City has been working with Osborne Engineering and that the process will be structured as two (2) projects. Scope of work to encompass Shoreline Drive and Jackson Street Pier. The City is currently working on the design phase. More information to come as the process develops.

Questions/Statements from Staff/Committee Members:

- Steve Poggiali – requests information on time frame. Mr. Aaron notes that for design build phase the City has set an end of March 2018 goal but that this is an aggressive schedule to meet.
- Bill Semans – requests information on planning for Shoreline Drive sub-surface conduit to facilitate future utility lines burial. Mr. Aaron notes that the City is currently looking at costs.
- Lance Warner – recommends a review of options for adjacent property owner assessments to defer costs.

Angie Byington reports on Bay Front Pathway Development –distributes eight (8) page handout (see attachment 1a). Reports on the first “stakeholder” meeting with purpose to update the current plan. Ms. Byington does not foresee major changes. Looking at a June – September

SANDUSKY BAY FRONT CORRIDOR COMMITTEE MINUTES

January 4, 2018

completion schedule. Next “stakeholder” meeting not scheduled at this time. Please e-mail Ms. Byington with inquiries.

Questions/Statements from Staff/Committee Members:

- Greg Voltz – states that the first stakeholder meeting was well attended with positive responses.
- Mike Zuilhof – states that it was a well planned meeting and presentation. Notes that further communication regarding the Pier Track is needed.
- David Miller – states that residents of the cove are concerned with the plans including the bridging the Pier Track.
- Discussion moves to the Pier Track concerns, bridging, and possible solutions (e.g.; rolling bridge – google rolling bridge London)
- Ms. Byington to look into matter to provide further information for next Bay Front Corridor meeting.

OLD BUSINESS:

Carl McGookey provides information on Bay Front Corridor Committee membership. Mr. McGookey reports that Mr. Pete McGory has indicated his desire to be removed and replaced on the Committee. Mr. Gary Mortus has requested to remain a member of the Committee. Membership issues to be coordinated with Ms. Kelly Kresser.

NEW BUSINESS:

Carl McGookey opens to the floor for nomination of 2018 officers for the Bay Front Corridor Committee.

Committee Chair Person – Nomination/Election:

- Kevin Zeiher moves to nominate Carl McGookey for 2018 Chair Person. Motion seconded by Lance Warner. Carl McGookey accepts nomination.
- Kevin Zeiher moves that nominations be closed and Mr. Carl McGookey be approved 2018 Chair Person of the Bay Front Corridor Committee by acclamation. Motion seconded by Joe Hayberger. Passed unanimously of all members present.

Committee Vice-Chair Person – Nominations/Election:

- Lance Warner moves that Kevin Zeiher be nominated for the position of Vice-Chair. Motion is seconded by Mark Harrington.
- Bill Semans moves that Mark Harrington be nominated for the position of Vice-Chair. Motion is seconded by Joe Hayberger.
 - Discussion ensues regarding Vice-Chair and Secretary positions.
 - Recommendation from the floor made to have dual Vice-Chairs that will share Secretary duties.
- Lance Warner and Bill Semans withdraw previous motions.

SANDUSKY BAY FRONT CORRIDOR COMMITTEE MINUTES

January 4, 2018

- Lance Warner moves to nominate Kevin Zeiher and Mark Harrington as Vice-Chairs to share Secretary duties of the Committee and that nominations be closed. Motion is seconded by Joe Hayberger. No further discussion. Motion passes with one abstention by Kevin Zeiher.

PUBLIC INPUT:

No public input.

GOOD OF THE ORDER:

Mike Zuilhof provides information on Ice Boating activities for the coming weekend.

ADJOURNMENT:

Lance Warner moves to adjourn. Motion seconded by John Lippus.

- Meeting adjourned by the Chair.

NEXT MEETING SCHEDULED:

THURSDAY, FEBRUARY 1, 2018 – 7:30 a.m. – Sandusky City Commission Chambers

Attachments (1a) – Bay Pathway



MATERIAL/COLOR PALETTE 2



MATERIAL/COLOR PALETTE 3



SAMPLE WAYFINDING

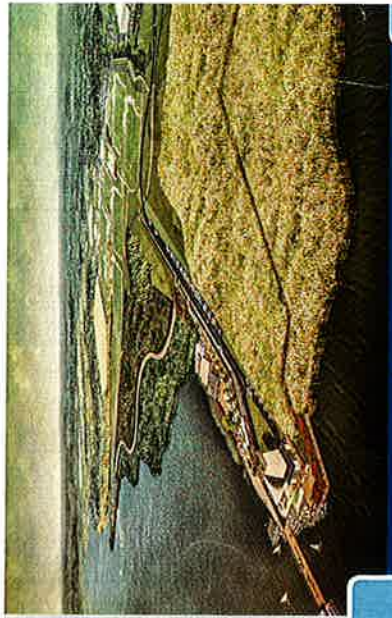


SAMPLE WAYFINDING

GREEN DOT EXERCISE

- Place your Green Dot sticker on your preferred color/material palette





LANDING PARK BIRD'S EYE



LANDING PARK PLAZA & KAYAK LAUNCH



LANDING PARK EASTERN OVERLOOK



EASTERN CORRIDOR



PATHWAY ALIGNMENT COMPARISON



MATERIAL/COLOR PALETTE 1



COASTLINE EVOLUTION



POTENTIAL PATHWAY ALIGNMENT



WESTERN CORRIDOR



DOWNTOWN CORRIDOR



EASTERN CORRIDOR



LANDING PARK

BICYCLE USER GROUPS

"Targeted" Bicycle User Groups: Ages 8 - 80

- Often referred to as the "targeted bicycle facility user" (i.e. EVERYONE)
- This group is typically associated with Class C Cyclists
- Usually prefer off-road trail/shared use path or sidewalk
- Trail users typically spend \$13.54 per day (in Ohio)



BICYCLE USER GROUPS

"Targeted" Bicycle User Groups: Long-Distance Riders

- Group lacks diversity
- Predominantly white males who are highly educated between the ages of 50 - 64
- This user group spends the most \$\$\$ while cycling (\$25 - \$75 per day in the U.S. (overnight trips))



X

1



TOPOGRAPHY



WETLANDS



PARKS + GREEN SPACE

BIKE FACILITIES

Bike Lanes

- Paved shoulders may be designated as a bike lane
- Smooth riding surface
- 4' wide w/o curb
- 5' wide w/ curb
- 5'+ on roadways w/ speeds greater than 45 mph
- See MUTCD for markings
- Not legal for pedestrians



BIKE FACILITIES

Protected Bike Lanes

- Paved shoulders may be designated as a bike lane
- Smooth riding surface
- 4' wide w/o curb
- 5' wide w/ curb
- 5'+ on roadways w/ speeds greater than 45 mph
- See MUTCD for markings
- Not legal for pedestrians



BIKE FACILITIES

Class C Cyclists

- Represent ~93% of people that own a bicycle
- "Interested but Concerned"
- Will only ride on completely separated bicycle facilities (side paths, shared use paths)



BIKE FACILITIES

Trail/Shared Use Path

- Same specifications as sidepath
- 10' paved ADA compliant trail
- 5' buffer when adjacent to a roadway
- 2' buffer on side that is not adjacent to a roadway
- Legal for pedestrians & bicyclists



BIKE FACILITIES

Side Path

- Same specifications as a shared use path (i.e. a trail)
- 10' paved ADA compliant trail
- 5' buffer when adjacent to a roadway
- 2' buffer on side that is not adjacent to a roadway
- Legal for pedestrians & bicyclists



BIKE FACILITIES

BUT.....

- When Class A Cyclists have children, they often become Class C Cyclists when riding with their kids!! (i.e. the Fearless become Concerned.....)



PEDESTRIAN FACILITIES

Sidewalks

- 5' width (new construction per ADAAG)
- 4' width if repairing existing (new construction per ADAAG)
- Less than 1/4" vertical change for existing
- Typically concrete w/ joints (can be decorative, pavers, stamped, etc.)



BICYCLE USER GROUPS



BICYCLE USER GROUPS



BICYCLE USER GROUPS

Class A Cyclists

- Represent ~2% of people that own a bicycle
- "Strong and Fearless"
- Will ride their bicycle as a vehicle in any situation



BIKE FACILITIES

Sharrows

- Good sight distance
- Low volumes
- Preferred 14 foot lanes
- Signage Important
- Sharrows markings not appropriate for over 35 mph



BICYCLE USER GROUPS

Class B Cyclists

- Represent ~5% of people that own a bicycle
- "Enthusiated and Confident"
- Prefer dedicated bike facilities (bike lanes, protected bike lanes)



HEALTH IMPACTS

- 32% of adults are obese
- Only 15% of adults engage in sufficient moderate physical activity
- 16% of children ages 2 - 19 are obese
- Inactivity can = diabetes, heart disease, stroke

Do incomplete streets contribute to this?



MENTAL HEALTH IMPACTS

- People heal quicker/ more effectively/ more happily when they have access to the outdoors and recreation
- Children with ADD can concentrate better after being in outdoor green settings.
 - The greener the setting, the less severe the symptoms.
- Beneficial to mood, day-to-day effectiveness & cognitive functioning



MENTAL HEALTH IMPACTS

- Outdoor and trail therapy (out-patient and in-patient) being used to treat:

- PTSD
- Depression
- Substance abuse & rehabilitation,
- Psychological illnesses



Pedestrian Movement

Why Did the Pedestrian Cross the Road?



Pedestrian Movement

.....To Get To the Other Side



Pedestrian Movement

.....To Get To the Other Side

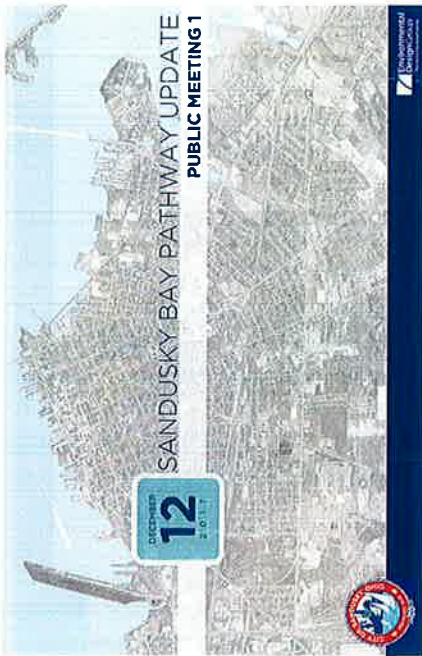


People walk where they want to walk, cross where they want to cross

The general public understands:

- How pedestrians travel
- What sidewalk are
- How to use a sidewalk





MEETING AGENDA

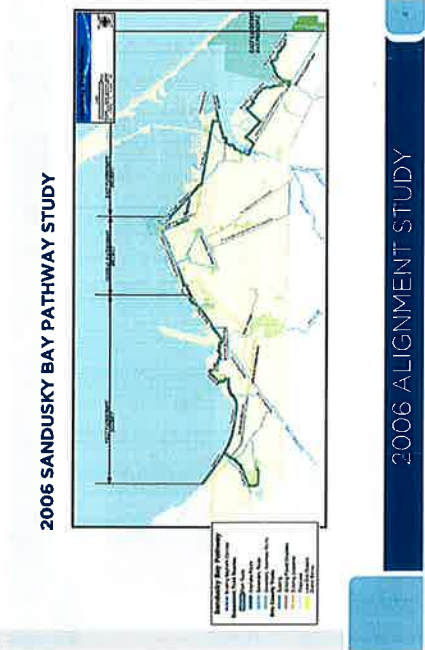
- WELCOME!
- project background + goals
- facility and user types
- mapping + analysis
- project timeline
- discussion + feedback

PROJECT BACKGROUND + GOALS

The Sandusky Bay Pathway is a coastal trail envisioned by the City of Sandusky in 2005 that stretches along the waterfront from the east corporation limit to the west corporation limit with several other on-street and off-street trails networking city roads and the city-wide park system. During the Bicentennial Vision process in 2015, residents and stakeholders expressed much interest in re-establishing an idle program for recreational and cycling trails.

With this vision in mind, the project will focus on the following key goals:

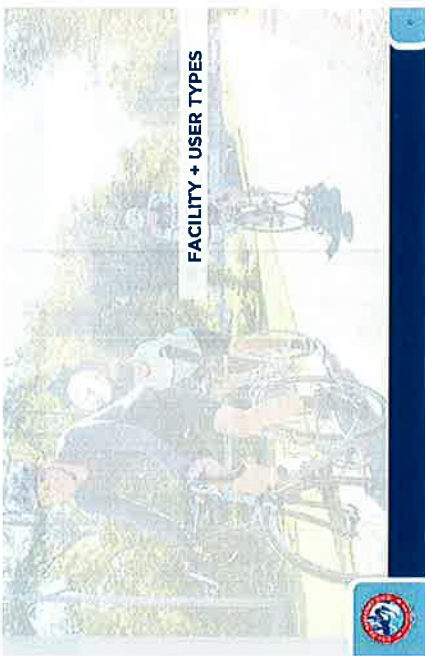
- Review and analyze the 2006 Pathway Alignment Study
- Determine potential routes and connections to existing destinations
- Develop signage and wayfinding opportunities
- Create detailed cost estimates and explore funding opportunities



2006 ALIGNMENT STUDY



STUDY AREA



FACILITY + USER TYPES